

FOR THIS LESSON...

WE ARE FOCUSING ON UNIT 5 IN HMH:
“FINDING YOUR PATH”

HMH Into Literature Texas: Grade 8

Interactive Correlation

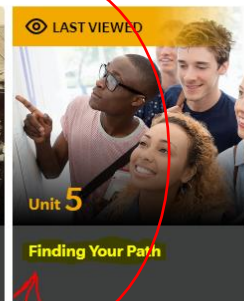
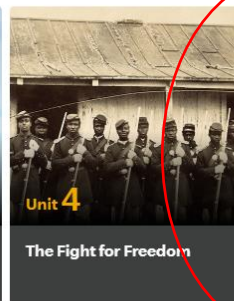
View by

CONTENT

STANDARDS



Units



To locate the assignments, click on your
assignment tab at the top in the middle.

Discover

Create

Assignments

Data & Reports

Groups

Click here to get the latest updates about Ed.



IMH Into Literature Texas: Grade 8

Interactive Correlation

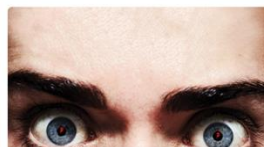
View by

CONTENT

STANDARDS



Units



BEFORE YOU READ...*THINK ABOUT:*

?

ESSENTIAL QUESTION

How do your teenage years prepare you for adulthood?

“BRONX MASQUERADE” HAS A UNIQUE TEXT STRUCTURE. HERE’S WHY:

ANALYZE STRUCTURE

In a novel, **structure** involves the writer’s arrangement of plot elements to tell a story. A **linear plot structure** tells the story in chronological order, following one or more protagonists, or main characters, as they deal with conflict. Some realistic fiction uses a **non-linear plot structure** in which the narrative jumps back and forth in time, using multiple protagonists, flashbacks, foreshadowing, parallel plot structures, or subplots. *Bronx Masquerade* has a non-linear plot structure and multiple first-person narrators. It includes both poetry and prose. The narration proceeds along parallel lines, with some time jumps. As you read, notice how each narrator provides his or her unique point of view.

Pay Attention to the type of language that is used also.

LANGUAGE CONVENTIONS

Modifiers Adjectives and adverbs are **modifiers** that can be used to show comparisons. Modifiers have **comparative** and **superlative** forms. The **comparative form** is used to compare two things, groups, or actions. The **superlative form** is used to compare more than two things, groups, or actions. Study these examples from *Bronx Masquerade*.

Comparative: “It’s not much better at home.”

Superlative: “I hate always being the tallest girl in school.”

As you read, note how Nikki Grimes uses modifiers to show comparisons.

AS YOU READ, PAY ATTENTION TO CHARACTER DEVELOPMENT!

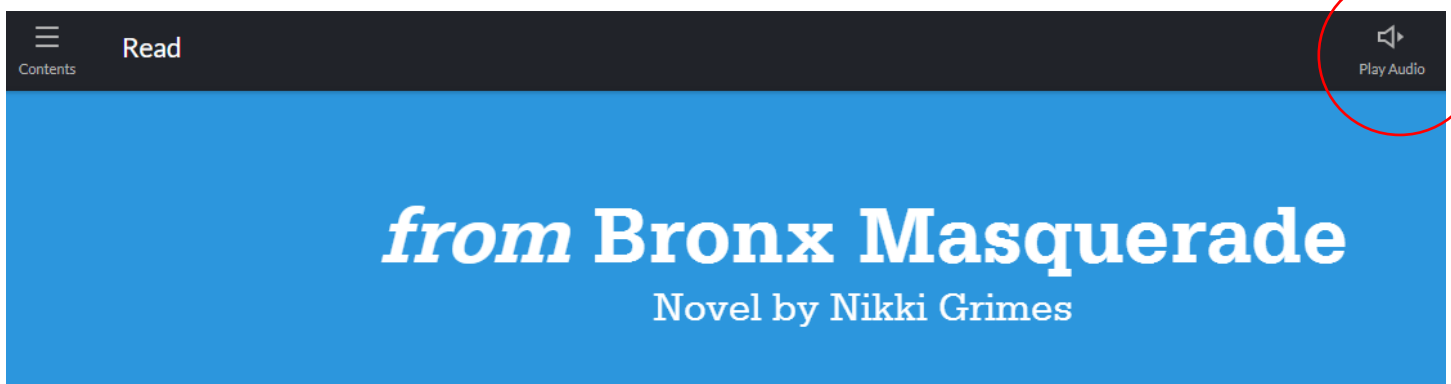
You can click on the Peer Coach Videos for more information.

ANALYZE CHARACTERIZATION

The way a writer creates and develops characters is known as **characterization**. In *Bronx Masquerade*, the school setting influences the characters' values and beliefs and has an important effect on their growth and development. The characters are encouraged to see and understand one another in new ways and to examine their own goals and aspirations.

To understand the characters' conflicts, challenges, and goals, pay attention to the clues the author provides about them. Here are some examples from *Bronx Masquerade*.

DON'T FORGET, YOU CAN CLICK HERE TO LISTEN TO THE AUDIO AS YOU READ!



Read

Contents

Play Audio

from **Bronx Masquerade**

Novel by Nikki Grimes

ALRIGHT...ENJOY! 😊